



Meridian View

Washington DC

A rooftop pavilion reaches out over Fifteenth Street and frames an amazing view of Meridian Hill Park. The pavilion itself acts as a solar chimney with built-in settings that provide cooling and fresh air to the previously isolated spaces in the basement. New A/C and heating systems provide comfort and energy savings. Warm wood lines the inside of the stucco form and channels light into the house via the stairwell. Spaces become more flexible by eliminating interior walls in favor of movable partitions and low counters. Kitchen and dining areas are lit with high-gloss finishes over wood tones and warm colors. Materials and systems chosen for their environmental properties include FSC certified wood, low-VOC paints and sealers, high performance air-conditioning, and Energy Star equipment and appliances.

FEATURES: Passive Solar Design - Heating and Cooling, Rainwater Harvesting, High Performance Mechanical System, Raised Floor, Residential Green Materials

Project Area: 3,000 sf

Construction Cost: \$400,000

Project Completion: 2009

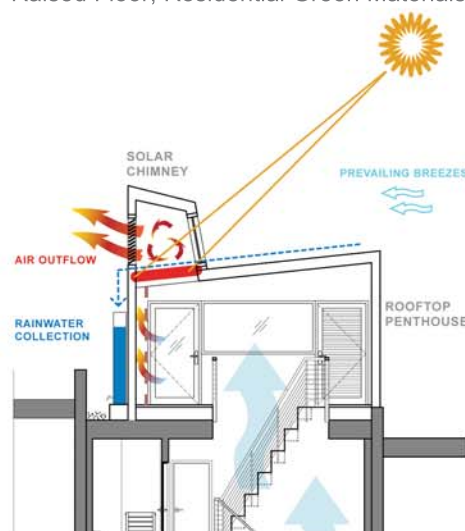


Diagram of Passive Cooling + Rainwater

